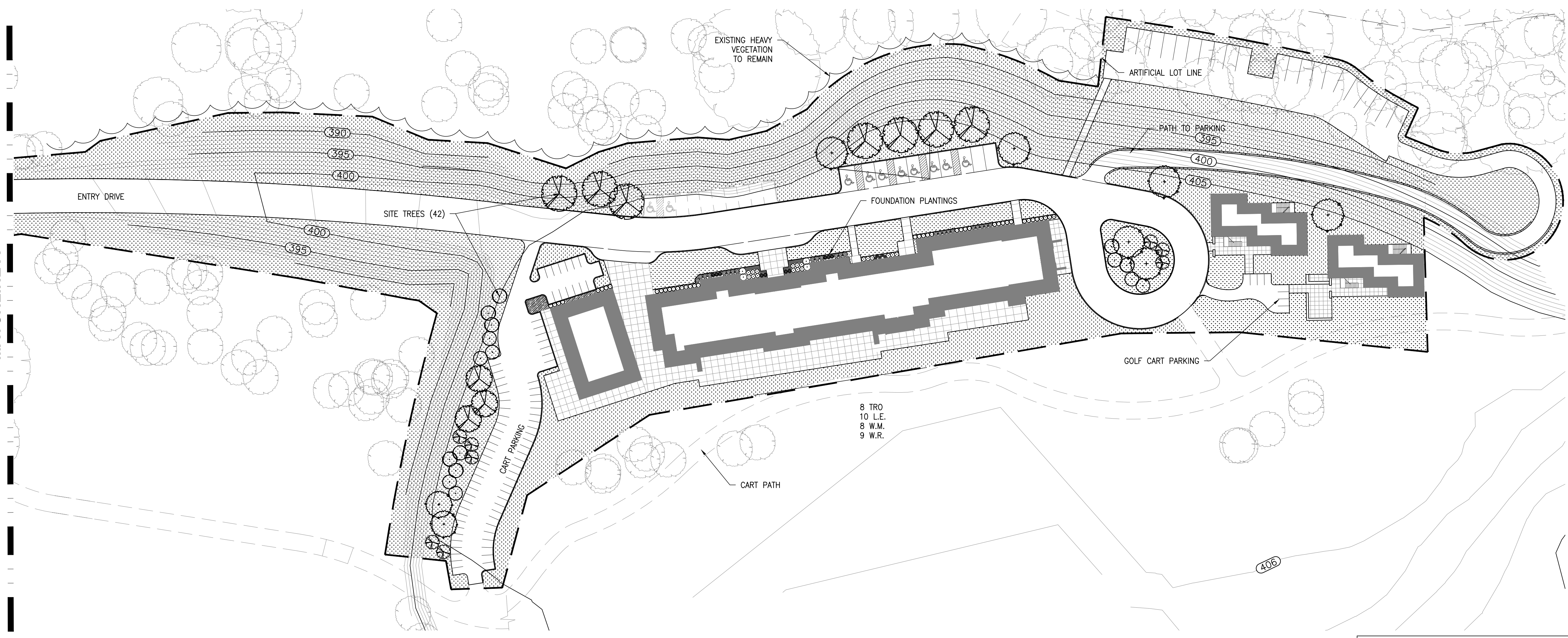


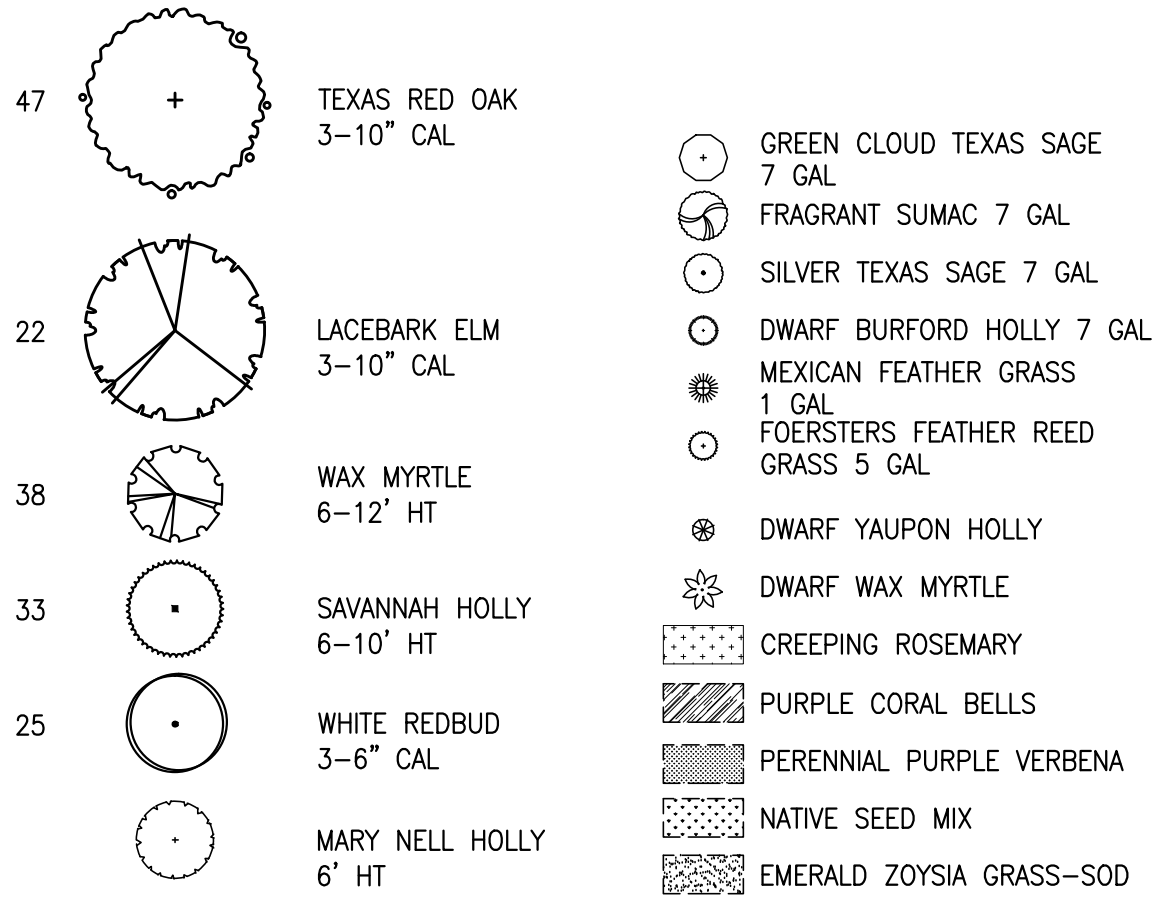
MATCHLINE A



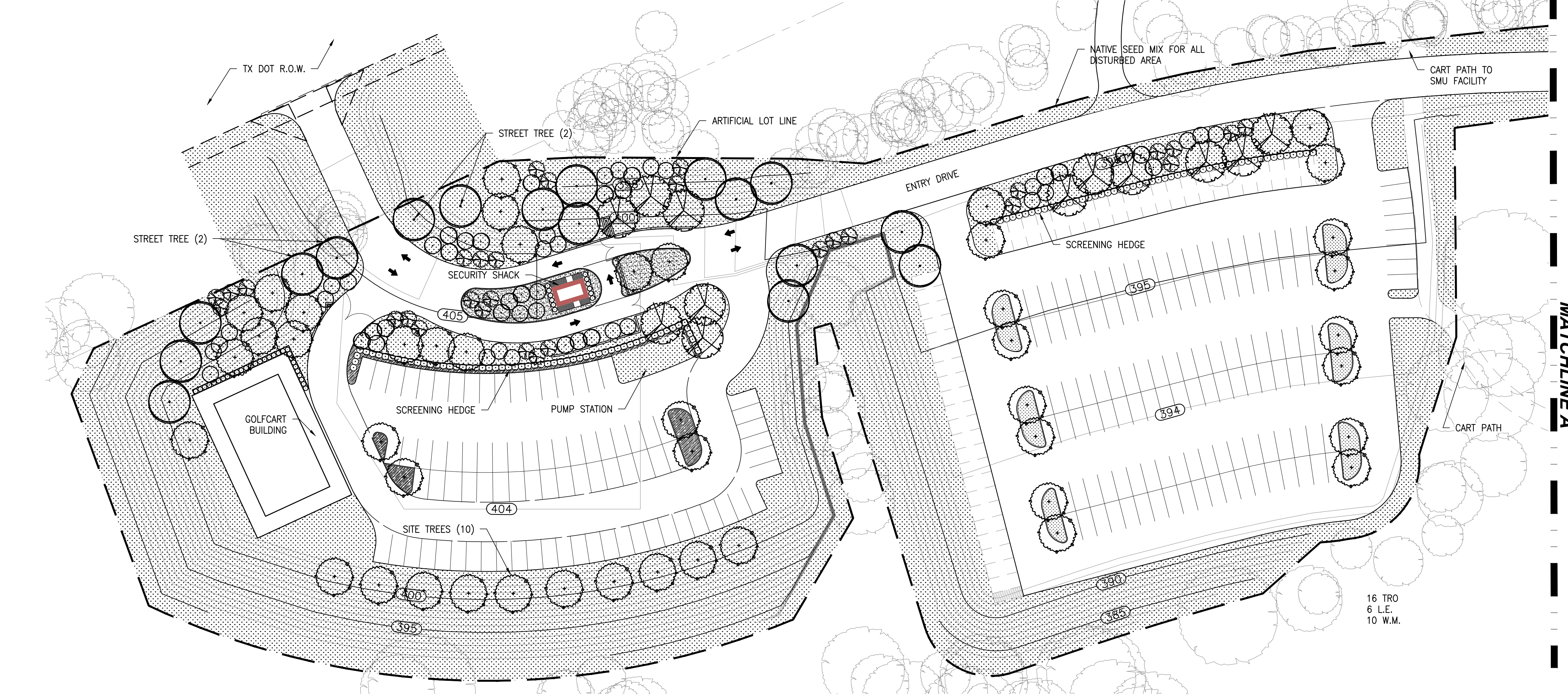
PLANTING GENERAL NOTES

- ALL PLANTS SHALL BE SET OUT FOR APPROVAL BY THE OWNER'S REPRESENTATIVE PRIOR TO INSTALLATION.
- FINE GRADING SHALL BE PERFORMED IN ALL AREAS TO BE LANDSCAPED. FINE GRADING SHALL INCLUDE THE REMOVAL OF DEBRIS, ROCKS, ETC. FROM THE SITE AND INSURE POSITIVE DRAINAGE IN ALL AREAS.
- THE CONTRACTOR SHALL LOCATE ALL UTILITIES AND EASEMENTS IN THE FIELD PRIOR TO COMMENCEMENT OF WORK. CONTRACTOR IS RESPONSIBLE FOR ANY DAMAGE TO UTILITIES DURING THE COURSE OF CONSTRUCTION.
- IT IS PREFERABLE THAT NO TREE BE STAKED. HOWEVER, CONDITIONS AND PLANT MATERIAL SIZE MAY NECESSITATE STAKING. THE OWNER'S REP SHALL DETERMINE IF SUPPORT IS NEEDED AND SHALL DIRECT THE CONTRACTOR ACCORDINGLY.
- THE CONTRACTOR SHALL REFER TO THE SPECIFICATIONS FOR ADDITIONAL INFORMATION AND REQUIREMENTS ASSOCIATED WITH THE LANDSCAPE AND ACCESSORIES.
- ALL PLANT MATERIALS SHALL MEET ANSI Z60.1 STANDARDS FOR CALIPER, HEIGHT AND ROOT BALL SIZE. ANY MATERIALS THAT DO NOT MEET OR EXCEED SUCH STANDARDS SHALL BE REJECTED AND REPLACED AT THE CONTRACTOR'S EXPENSE.
- BALLED AND BURLAPPED TREES SHALL HAVE THE TOP HALF OF THE WIRE BASKET REMOVED. THE BURLAP SHALL BE REMOVED TO THE GREATEST EXTENT POSSIBLE, USING A KNIFE TO CUT AND REMOVE THE BOTTOM HALF UNDER THE WIRE BASKET THAT REMAINS.
- ALL PLANT MATERIALS SHALL MEET ARTICLE X SIZE REQUIREMENTS.

PLANTING LEGEND



NOTE: NO ONE TREE SPECIES EXCEEDS 30% OF TOTAL TREES

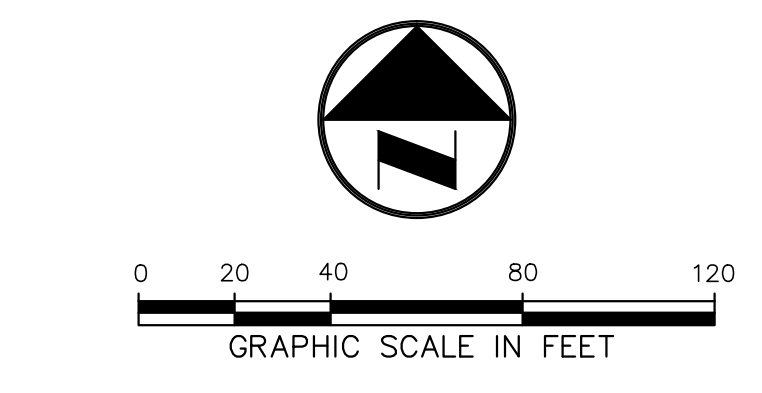


CITY LANDSCAPE TABULATIONS (PER ARTICLE X)

ZONING: PD 883	
TOTAL SITE AREA:	420,575 SF
MANDATORY PROVISIONS	TABULATIONS/COMMENTS
PROTECTED TREE MITIGATION:	SEE ALTERNATIVE MITIGATION PLAN
PERIMETER LANDSCAPE BUFFER:	NO RESIDENTIAL ADJACENCY
SCREENING OF OFF STREET LOADING SPACES:	NO RESIDENTIAL ADJACENCY OR PUBLIC STREET ADJACENCY
SITE TREES: 1 TREE PER 4,000 SF SITE AREA	REQ'D 420,575/4,000 = 105 NEW PROVIDED: 165 NEW
STREET TREES: 1 TREE PER 50 LF OF STREET FRONTAGE	LOOP 12 (170 LF) REQ'D 170/50 = 4 NEW PROVIDED 4 NEW
PARKING LOT TREES:	REQ'D: EVERY PARKING SPACE TO BE WITHIN 120' OF CANOPY TREE PROVIDED: EVERY SPACE WITHIN 120' OF CANOPY TREE
SCREENING OF OFF-STREET PARKING:	PROVIDED

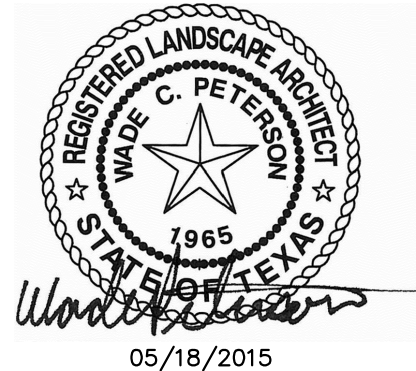
DESIGN STANDARDS

DESIGN STANDARDS	TABULATIONS/COMMENTS
FOUNDATION PLANTING	REQ'D: MIN 3' WIDE BED ALONG 50% OF THE PORTION OF THE FOUNDATION FACING STREET PROVIDED: EVERGREEN SHRUB PLANTINGS (3' HEIGHT MIN.)
SCREENING OF OFF STREET PARKING	REQ'D: ALONG FRONTAGE OF PARKING LOT EXCEPT DRIVEWAYS AND VISIBILITY TRIANGLES. PROVIDED: EVERGREEN SHRUB PLANTINGS (3' HEIGHT MIN.)



NO.	DATE	REVISION
1	07/06/2015	ADJUSTMENTS PER CITY ARBORIST
2	07/27/2015	ADJUSTMENTS PER CITY ARBORIST
3	10/22/2015	ADJUSTMENTS PER CITY COMMENTS
4	11/18/2015	ADJUSTMENTS PER CITY COMMENTS
5	12/02/2015	BUILDING FOOTPRINT ADJUSTMENTS
6	01/14/2016	MINOR AMENDMENT

Pacheco Koch
 7557 RAMBLER ROAD, SUITE 1400
 DALLAS, TX 75231 972.235.3031
 TX REG. ENGINEERING FIRM F-14439
 TX REG. SURVEYING FIRM LS-10193805



PD 883 LANDSCAPE PLAN
TRINITY GOLF COURSE
CLUBHOUSE FACILITY
CITY OF DALLAS, TEXAS
PD 883

DESIGN	DRAWN	DATE	SCALE	NOTES	FILE	NO.
WCP	GBH	MAY 2015				LP-1

G:\17\2016 - 4:49PM M:\DWG-27\2741-13\046\LANDSCAPE\CITY LANDSCAPE\CITY LANDSCAPE\CLUBHOUSE\PK-LA CLUBHOUSE.DWG

1 LAYOUT PLAN
1" = 40'-0"